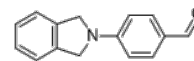


Product Name : ALDH1A inhibitor 673A
Cat. No. : PC-36129
CAS No. : 109437-62-9
Molecular Formula : C₁₅H₁₃NO
Molecular Weight : 223.275
Target : Aldehyde Dehydrogenase (ALDH)
Solubility : 10 mM in DMSO



Biological Activity

ALDH1A inhibitor 673A (ALDH1Ai 673A) is a potent, selective, pan-**ALDH1A** inhibitor with IC₅₀ of 246, 230 and 348 nM for ALDH1A1, ALDH1A2 and ALDH1A3, respectively.

ALDH1Ai 673A shows no significant activity against ALDH2 (IC₅₀ 14 mM) or numerous other ALDH family members.

ALDH1Ai 673A preferentially kills CD133+ ovarian cancer stem-like cells (CSCs), induces necroptotic CSC death, mediated, in part, by the induction of mitochondrial uncoupling proteins (UCPs) and reduction in oxidative phosphorylation.

ALDH1Ai 673A is highly synergistic with chemotherapy, reducing tumor initiation capacity and increasing tumor eradication in vivo.

References

Chefetz I, et al. *Cell Rep.* 2019 Mar 12;26(11):3061-3075.e6.

Caution: Product has not been fully validated for medical applications. Lab Use Only!

E-mail: tech@probechem.com